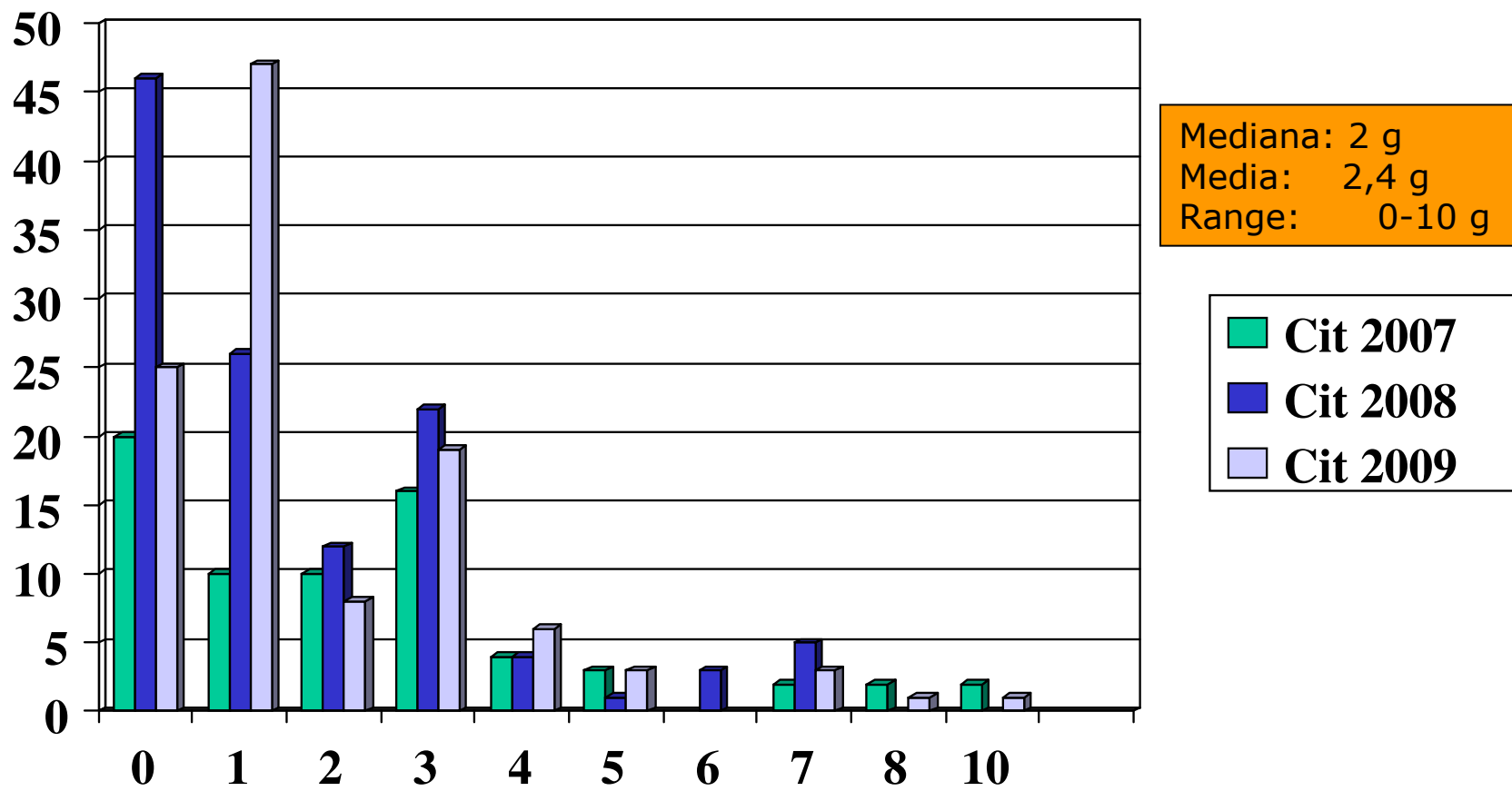


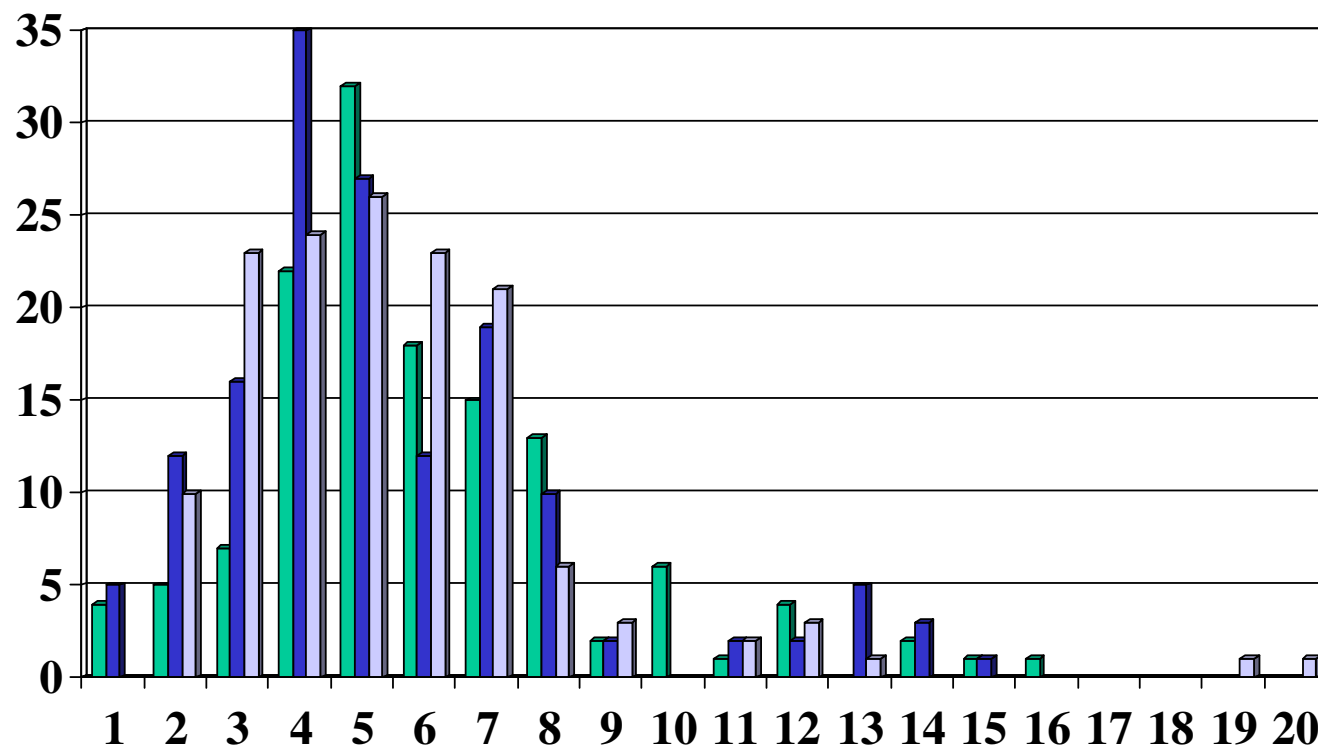
DIAGNOSI CITOLOGICA

Tempi di refertazione in giorni



PEZZO OPERATORIO DIAGNOSI E CARATTERIZZAZIONE MOLECOLARE

Tempi di refertazione in giorni



Mediana: 5 g
Media: 5,9 g
Range: 1-16 g

ist. 2007
ist. 2008
ist. 2009